

Femto Diagnostics

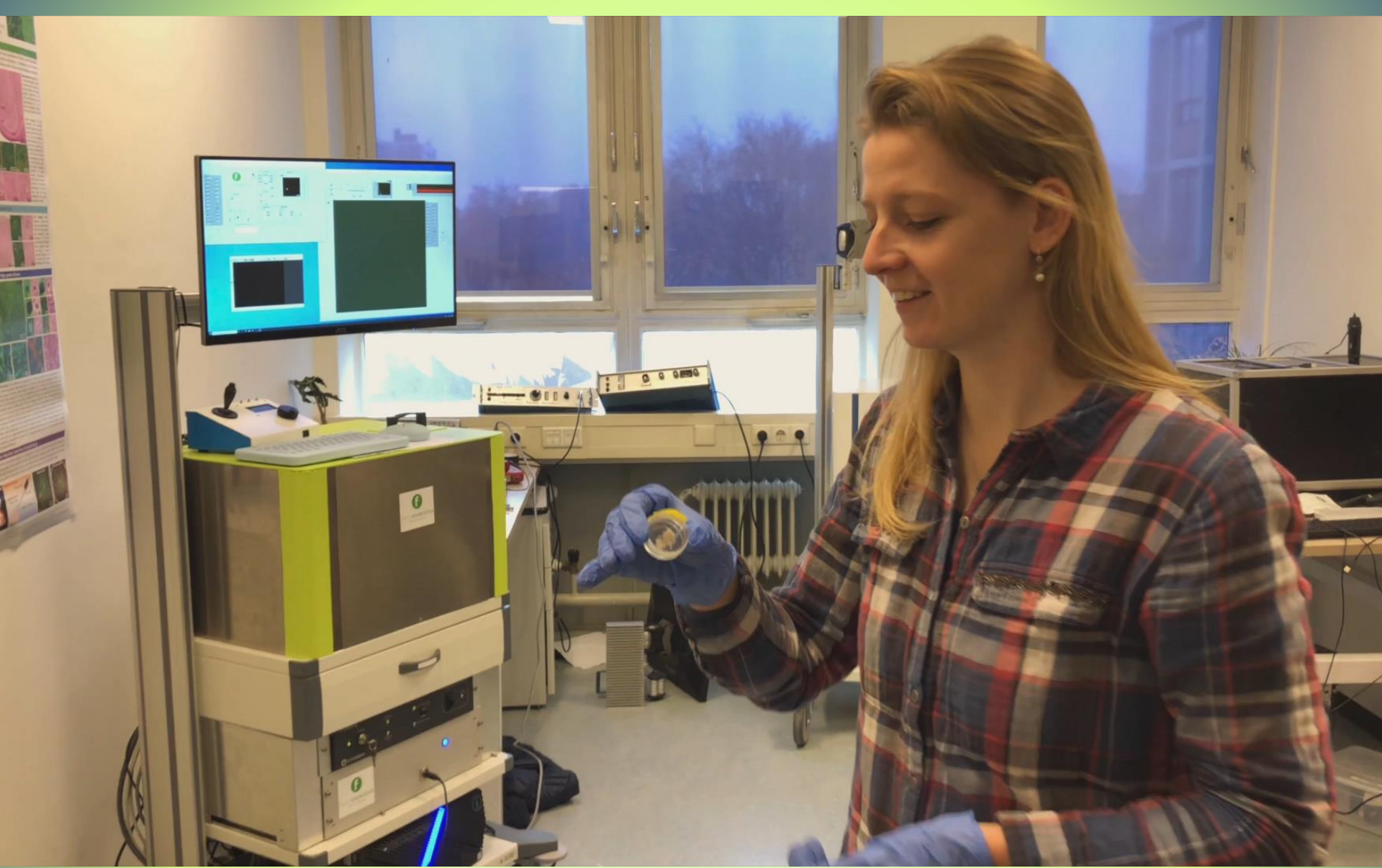
Diagnostics/consultancy on femtosecond laser equipment

Development of biomedical diagnostics.



FEMTO **DIAGNOSTICS**

FAST PATHOLOGY





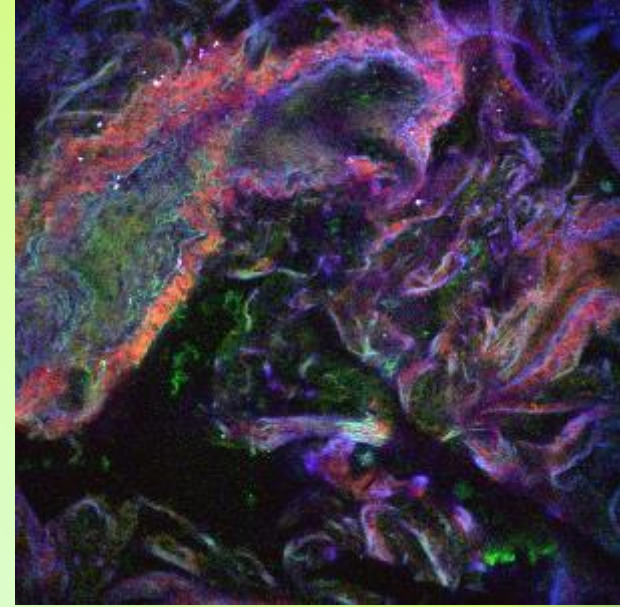
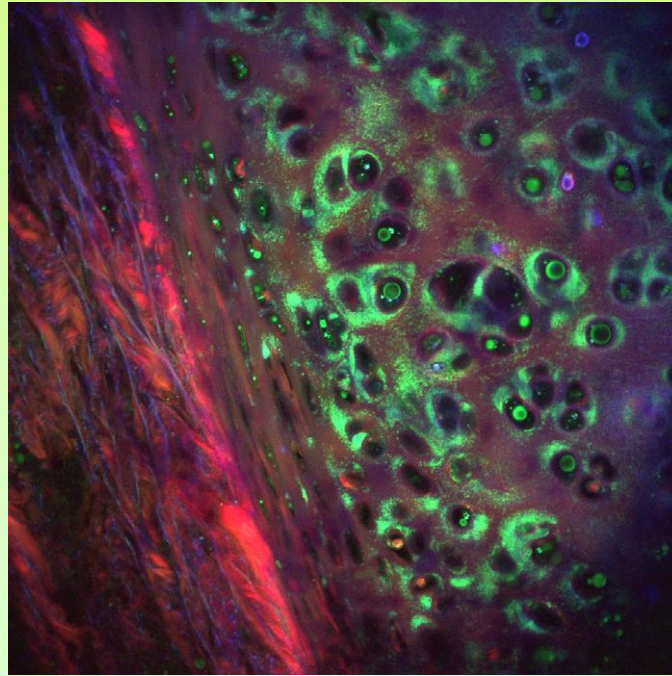
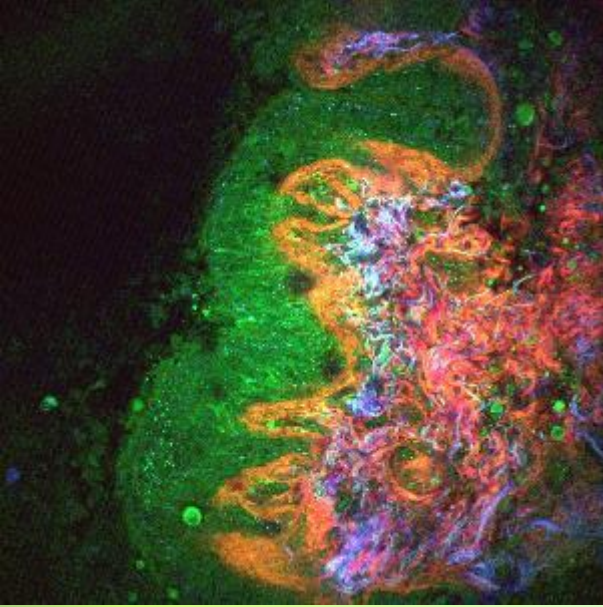
FEMTO **DIAGNOSTICS**
FAST PATHOLOGY

Design goals



FEMTO **DIAGNOSTICS**
FAST PATHOLOGY

- Quick information on tissue immediately after excision, no fixation or staining required
- Low average power exposure, less than a laser pointer, also adaptable to *in vivo* applications
- Much more power available, currently tuned down for most “heat sensitive” samples: lung tissue
- Tissue afterwards available for standard pathology
- Affordable technology




FEMTO DIAGNOSTICS
FAST PATHOLOGY



COHERENT



SEED LASERS

This presentation was presented at EPIC Meeting on Photonics for Cancer Diagnostics and Treatment 2019

HOSTED BY



SILVER SPONSORS



EU initiatives funded by
www.photonics21.org



BRONZE SPONSORS

