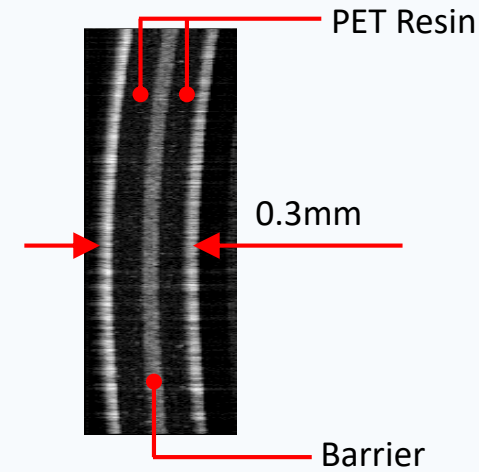
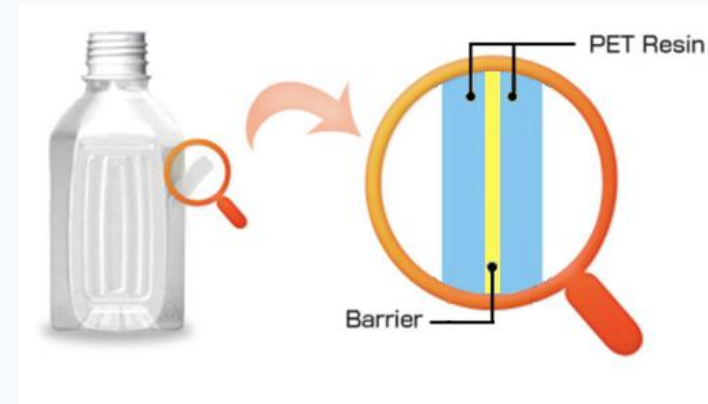




Tunable Lasers & Swept-Source Optical Coherence Tomography (SS-OCT)



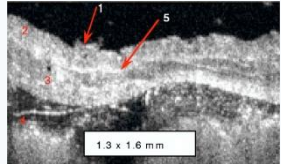
SS-OCT

- ❖ Real time, 3D imaging technique
- ❖ Visualize subsurface features
- ❖ Non contact & Non-invasive
- ❖ High resolution, 10 μm

Medical Applications

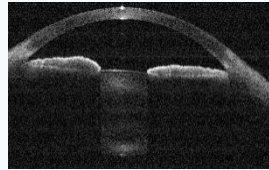
sante

Oral



Petra Wilder-Smith, et al.
J. of Biomedical Optics Sep/ 2005 Vol.10 No.5

Ophthalmic



Brain



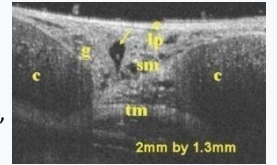
Kostadinka Bizheva, et al.,
J. of Biomedical Optics,
July/ 2004 Vol.9 No.4

Esophagus



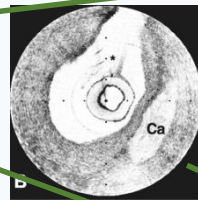
Z.P.Chen, et al.,
Opt. Express, Aug/ 2007
Vol. 15 No. 16

Trachea



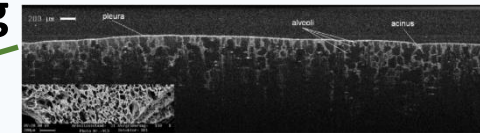
Matthew Brenner, et al.,
J. of Biomedical Optics,
Sep/ 2007 Vol.12 No.5

Cardiovascular



Guillermo J. Tearney, et al.
J. of Biomedical Optics
Mar/ 2006 Vol.11 No.2

Lung

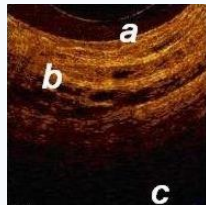


Alexander Popp, et al.,
J. of Biomedical Optics, Jan/ 2004
Vol.11 No.1

Dental

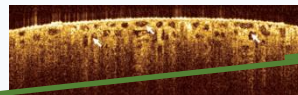


Pancrea



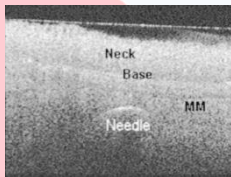
Pier Alberto, et al.
J Pancreas (Online)
2007 Vol.8 No.2

Kidney



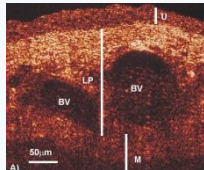
Yu Chen, et al.
J. of Biomedical Optics
Sep/ 2007 Vol.12 No.3

Stomach



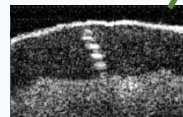
Yonghong He, et al.
J. of Biomedical Optics
Jan/ 2004 Vol.9 No.1

Bladder

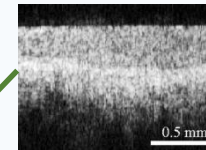


Ying T. Pan, et al.
J. of Biomedical Optics
Sep/ 2007 Vol.12 No.5

Skin

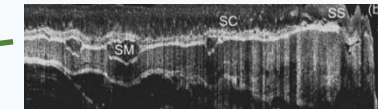


Cervix



Ilya V. Turchin, et al.,
J. of Biomedical Optics,
Nov/ 2005 Vol.10 No.6

Colon



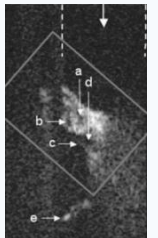
Alexandre R. Tumlinson, et al.,
J. of Biomedical Optics,
Nov/ 2006 Vol.11 No.6

Blood flow



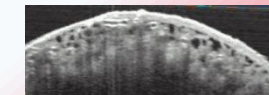
Bradley A. Bower, J. of Biomedical Optics,
Jul/ 2007 Vol.12 No.4

Cochlea



Fangyi Chen, et al.,
J. of Biomedical Optics,
Mar/ 2007 Vol.12 No.2

Bone



SS-OCT Product Range

sante



IVS-2000

Modular OCT system for research applications.
($1\mu\text{m}$ & $1.3\mu\text{m}$)



Argos

Clinically approved biometer.

Components

- Scanning lasers
- Interferometers
- Balanced Photodetector



- Data acquisition cards (DAQ)
- OCT acquisition software
- Probe with scanner



Photonics Pioneer

World's first commercial Tunable Laser in 1986
First commercial swept-source laser in 2005

santec

Leading Company for Ophthalmic SS-OCT

- ❖ Over 8,000 swept-source lasers shipped.
- ❖ 6 out of 9 FDA approved SS-OCT systems use Santec's OCT engine.
(Ophthalmology, Endoscopy, Dermatology, Cardiovascular imaging)
- ❖ Santec holds more than 80 patents for swept-source lasers and SS-OCT.
- ❖ ISO 9001, ISO 14001 & ISO 13485 manufacturing.



Slide 6



Thank you

Merry Christmas

&

Prosperous New Year

David Heard

david@santec.com

+44 1235-250010

This presentation was presented at EPIC Meeting on Photonics for Cancer Diagnostics and Treatment 2019

HOSTED BY



SILVER SPONSORS



EU initiatives funded by
www.photonics21.org



PHOTONICS PUBLIC PRIVATE PARTNERSHIP

BRONZE SPONSORS

