

What does iThera do?

- Development and marketing of biomedical imaging systems for clinical and preclinical research based on the photoacoustic effect



*MSOT inVision
for whole-body
mouse imaging*



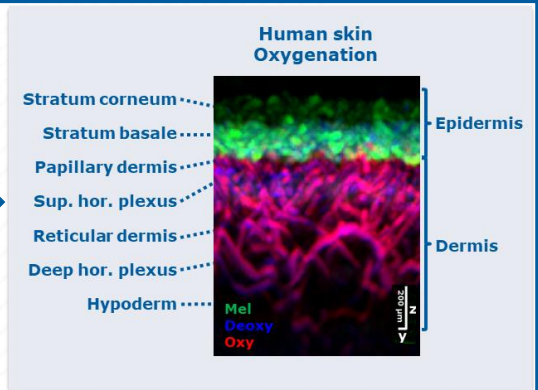
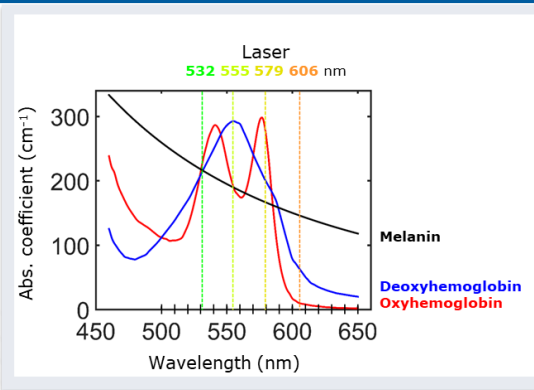
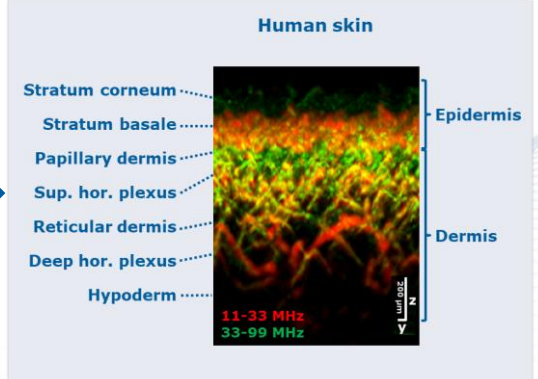
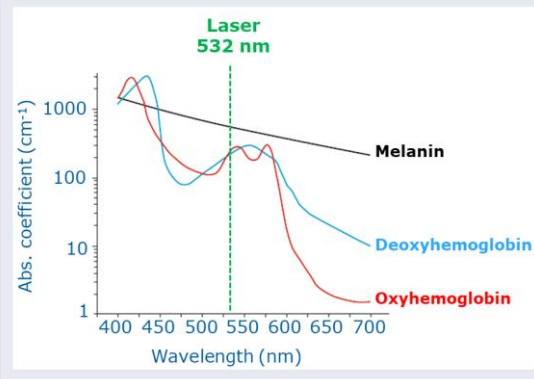
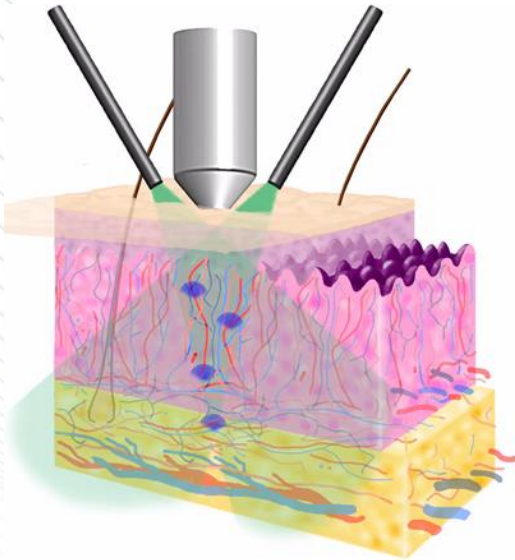
*MSOT Acuity
for clinical
imaging*



*RSOM Explorer
for high-resolution
skin imaging*

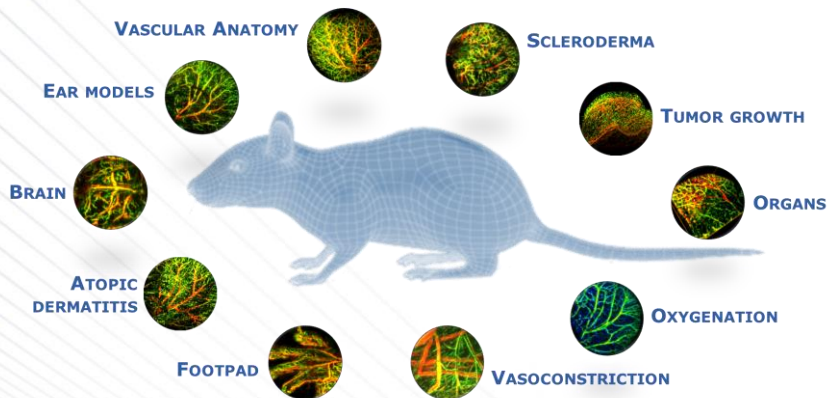
What does iThera do with the laser?

Laser excitation → Ultrasound detection

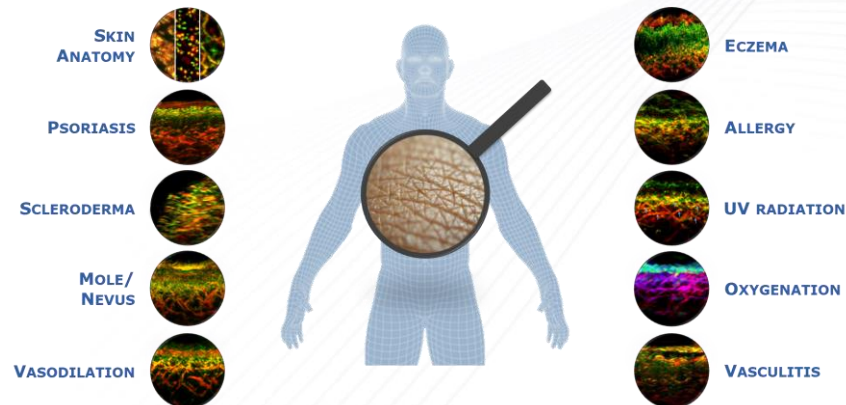


What can RSOM be used for?

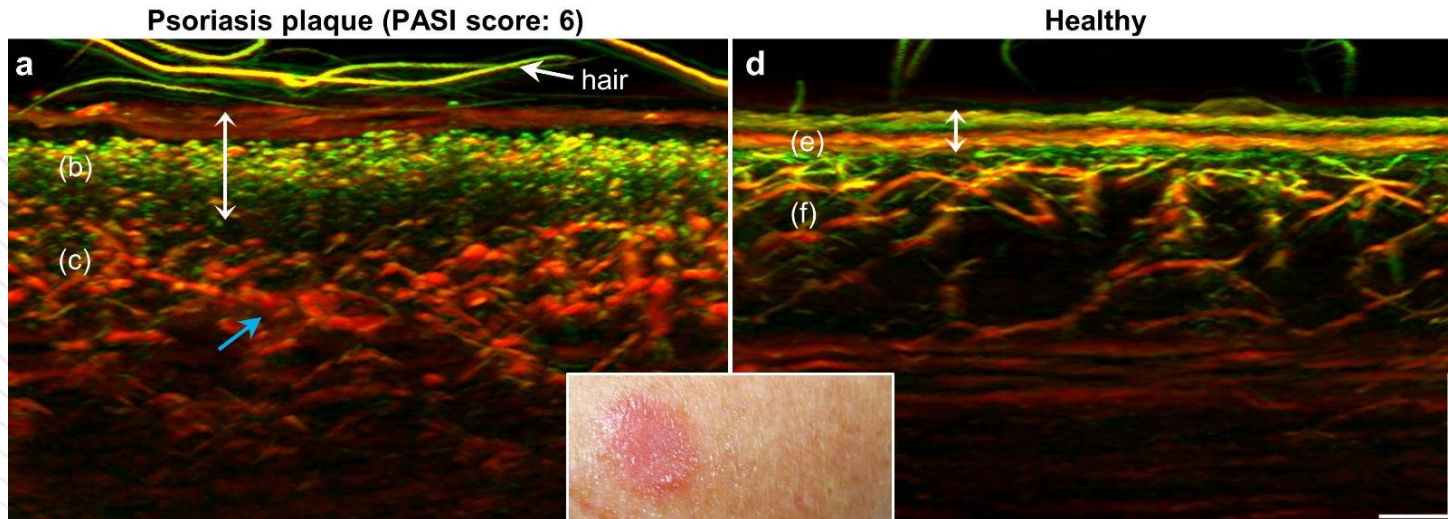
pre-clinical applications



clinical applications



Disease biomarkers in psoriasis



Aguirre J et al.,
Precision assessment
of label-free psoriasis
biomarkers with ultra-
broadband optoacoustic
mesoscopy. *Nat Biomed
Eng.* 2017; 1:0068.

- Healthy and psoriatic human skin was imaged
- Several skin features were visualized, including epidermal thickening (acanthosis), enlarged capillary loops, distorted dermal vasculature with increased blood volume

PARTICIPATE IN AN IMAGING REVOLUTION.

Introducing MSOT, the next generation in molecular imaging.