



MICLEDI microdisplays

EPIC ONLINE EVENT

DEC. 13, 2021

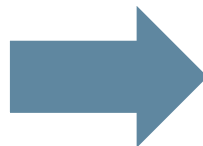
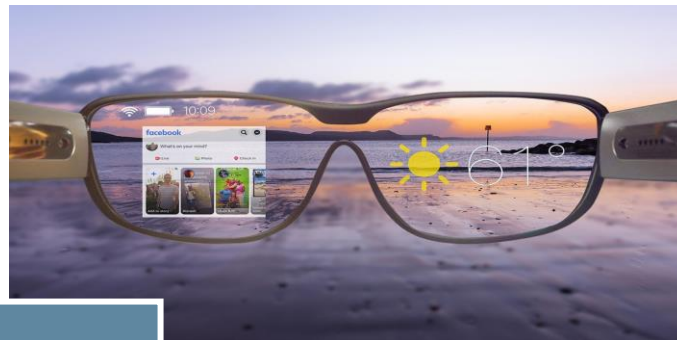
AR MARKET DEVELOPMENT



Today: Large, Heavy, Expensive, Poor Image



Tomorrow: Compact, Attractive, Low-cost, Low Power, Beautiful Image



The dream



Cfr. MagicLeap

The big elephant in the room. How to solve:

- Accommodation and Convergence
- Occlusion

The display performance (brightness, size, power consumption, image quality, resolution) is one of the key bottlenecks for wider consumer AR adoption.

- > FHD with <math><3\mu\text{m}</math> pitch
- 1Mnits D65 white light
- Narrow beam shape for waveguide optics
- High efficiency \rightarrow low power consumption
- Highest image quality in advanced node CMOS
- price at > xMunit volumes

From 35,000 feet...

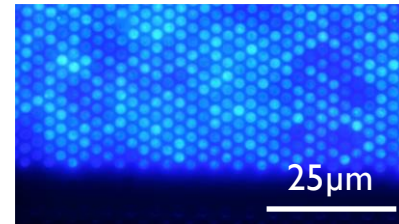
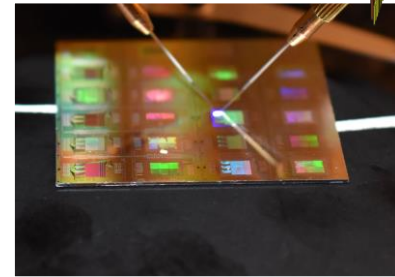
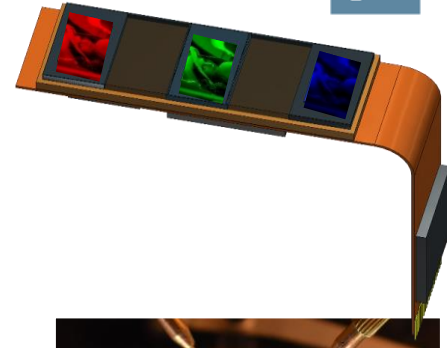
Company:	MICLEDI microdisplays – founded in 2019
Technology:	IMEC – technology partner well before 2019
Product:	microLED Display Modules (light engines)
Business model:	B2B Integrated Circuit Component Sales
Key Attributes:	Size, Resolution, Power Efficiency, Image Quality
Financials:	Pre-production, Early Revenue

We are

- A Fabless ‘Light Engine Module’ Product Company focused on one of the key enabling components for the growing AR Market

We Have

- Unique access to a world class development infrastructure (300mm) – needed to achieve future AR
- Patent protected LED design and integration technology



BUSINESS MODEL: A FABLESS SUPPLIER OF FINISHED DISPLAYS

Collaboration opportunity across the supply chain (e.g., epi-growth, foundry, packaging, test, design, metrology)

