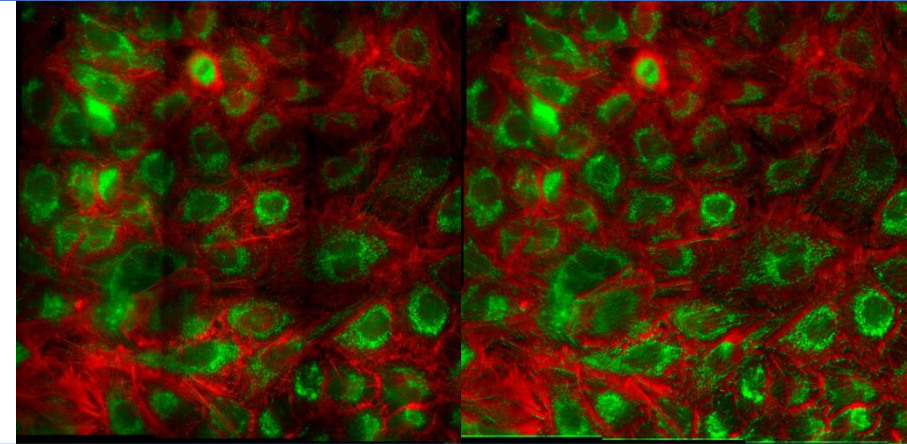
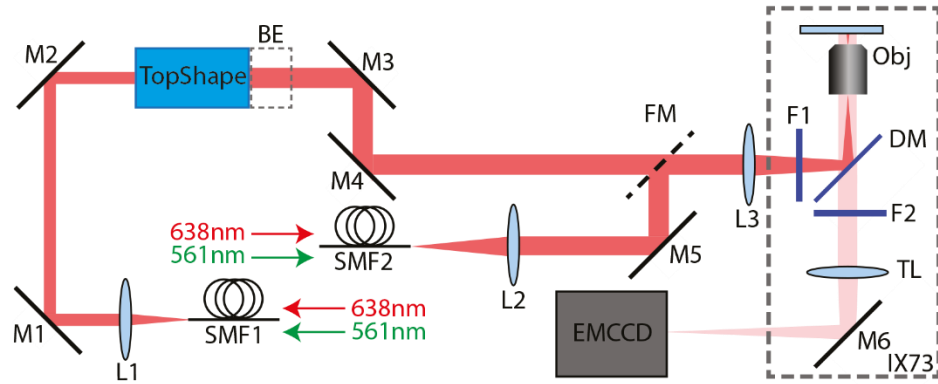
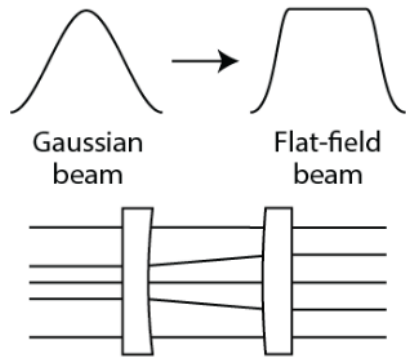


CREOL - Beam shaper for microscopy

UNIFORM ILLUMINATION IN (FLUORESCENCE) MICROSCOPY



- = College of Optics and Photonics/University of Central Florida (CREOL) worked on further development of a laser-based microscope set-up for uniform illumination
- = asphericon's TopShape and BeamExpander allow the transformation of Gaussian beams into a flat Top-Hat profile and thus the uniform illumination of the slide
- = Homogeneity > 95%





a|TopShape, a|TopShape LongDistance


- = Transforms collimated Top-Hat beams
- = Stable beam profiles up to 300 mm and as LD for up to 1.0 m
- = Scalable input and output beam
- = Optimized for 350 nm - 2500 nm

CONTACT

asphericon GmbH
 Stockholmer Str. 9 | 07747 Jena | Germany
 Mr. Torsten Stephan

 +49 (0) 3641 - 3100 566

 t.stephan@asphericon.com

 www.asphericon.com