



# **LIVERAGE TECHNOLOGY INC.**

---

**HOT PeT II –**

**High Speed Optical Transceiver Power Meter**

# LIVERAGE PROFILE



Hsinchu County, Chubei City



- Founded in July 20, 2003
- CEO : Dr. Simon Gau
- Office & Factory Areas : 2000 m<sup>2</sup>
- Certificates:  
RoHS, ISO 9001, ISO 14001, TUV, CE, UL, CB

# LIVERAGE TECHNOLOGY INC.

## HOT Pet II (High-speed Optical Transceiver Power Meter)

### Subsystem



QSF2P+ / QSF2P28



QSF2P-DD

### APPLICATION



MPO Connector



Touch panel design



Testing Data rate  
40G -400G



4~8 channels  
output power in  
the optical network  
at one time



Record 600 data

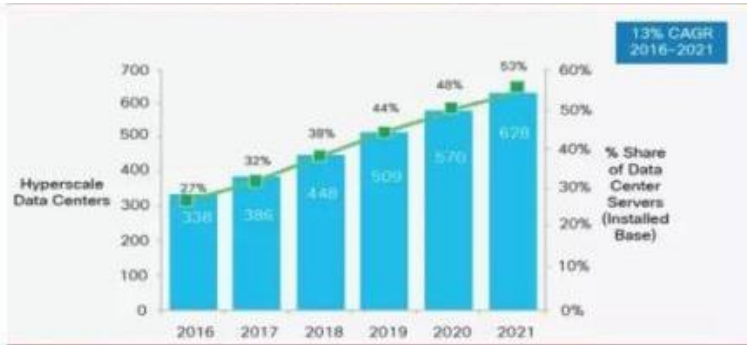


LC to MPO adapter  
designed for QSF2P+ &  
QSF2P28 CWDM4  
Transceiver Module

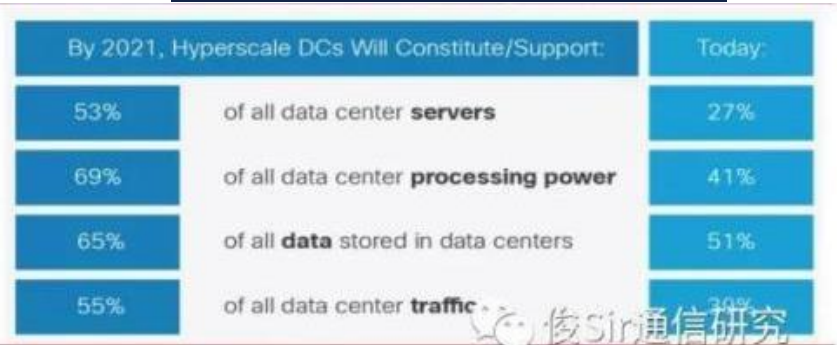
**Transceiver Data Rate : 40Gbps ~ 400Gbps**

# Analysis & Opportunity of the Industry

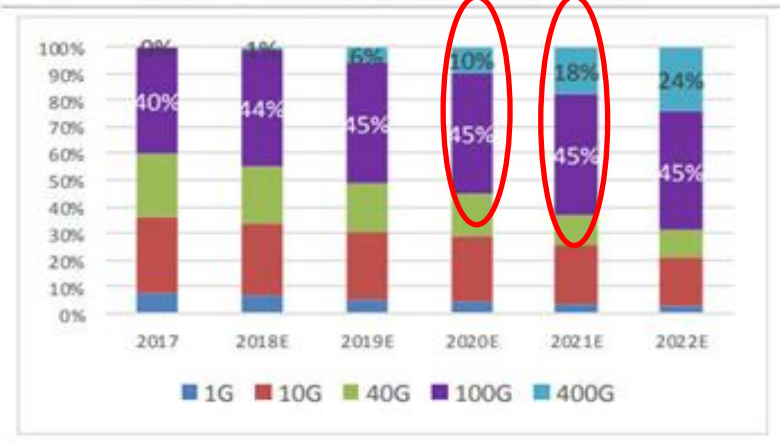
The growth of global data centre



The ratio of super scale data centre



The ratio trend of various transceiver at data centre



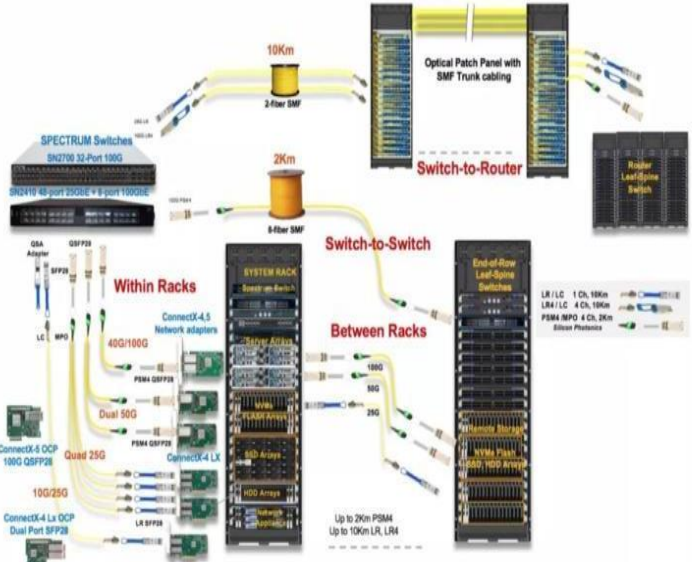
The market portion of transceiver at data centre



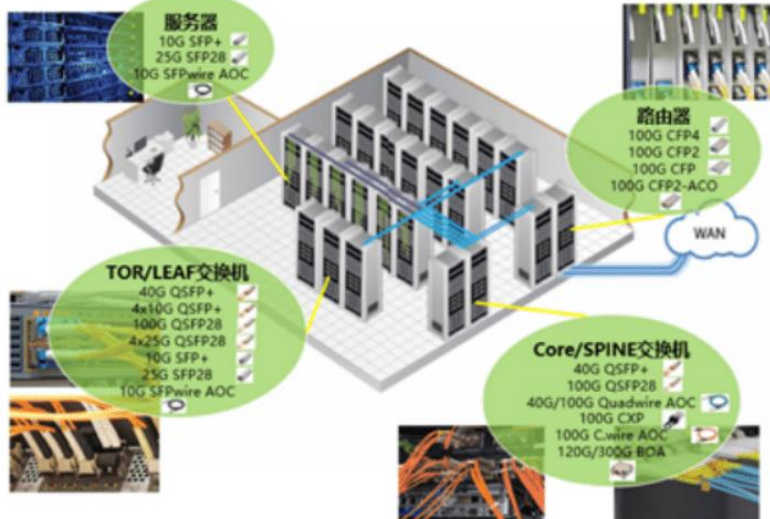
Leading Technology Trend:

- Data center migrated to 400G era
- Both fixed line and wireless network migrated to 5 G since 2020

# Analysis & Opportunity of the Industry



Data centre networks



The 400G transceiver will be in a great demand as 400G switch system is mature, and the upper stream chips and passive components have been ready .

\* HOT Pet : Sales to Softbank (data center)

# The Common QSFP Modules

QSFP Module	Wavelength	Speed	Channel
40G SR QSFP+	850nm 、 850nm 、 850nm 、 850nm	10.315G * 4	4
40G LR 、 ER4 、 CWDM4 QSFP+	1271nm 、 1291nm 、 1311nm 、 1331nm		
40G PSM4 QSFP+	1310nm 、 1310nm 、 1310nm 、 1310nm		
100G SR4 QSFP28	850nm 、 850nm 、 850nm 、 850nm	25.78125G * 4	4
100G LR4 、 ER4 QSFP28	1295.56nm 、 1300.05nm 、 1304.58nm 、 1309.14nm		
100G CWDM4 QSFP28	1271nm 、 1291nm 、 1311nm 、 1331nm		
100G PSM4 QSFP28	1310nm 、 1310nm 、 1310nm 、 1310nm		
200G SR8 QSFP-DD	850nm 、 850nm 、 850nm 、 850nm 、 850nm 、 850nm 、 850nm 、 850nm	25.78125G * 8	8
200G PSM8 QSFP-DD	1310nm 、 1310nm 、 1310nm 、 1310nm 、 1310nm 、 1310nm 、 1310nm 、 1310nm		
200G SR4 QSFP56	850nm 、 850nm 、 850nm 、 850nm	53.125 * 4 (PAM4)	4
200G LR4 QSFP56	1295.56nm 、 1300.05nm 、 1304.58nm 、 1309.14nm		
200G FR4 QSFP56	1271nm 、 1291nm 、 1311nm 、 1331nm		
400G SR8 QSFP-DD	850nm 、 850nm 、 850nm 、 850nm8 、 50nm 、 850nm 、 850nm 、 850nm	53.125 * 8 (PAM4)	8
400G LR8 QSFP-DD	1273.55 、 1277.89 、 1282.26 、 1286.67 1295.56nm 、 1300.05nm 、 1304.58nm 、 1309.14nm		
400G FR8 QSFP-DD	1271nm 、 1291nm 、 1311nm 、 1331nm 、 1351nm 、 1371nm 、 1391nm 、 1411nm		
400G DR4 QSFP-DD	1310nm 、 1310nm 、 1310nm 、 1310nm	106.25G * 4 (PAM4)	4
400G LR4 QSFP-DD	1295.56nm 、 1300.05nm 、 1304.58nm 、 1309.14nm		
400G FR4 QSFP-DD	1271nm 、 1291nm 、 1311nm 、 1331nm		

# HOT Pet II: Choose the rate and mode



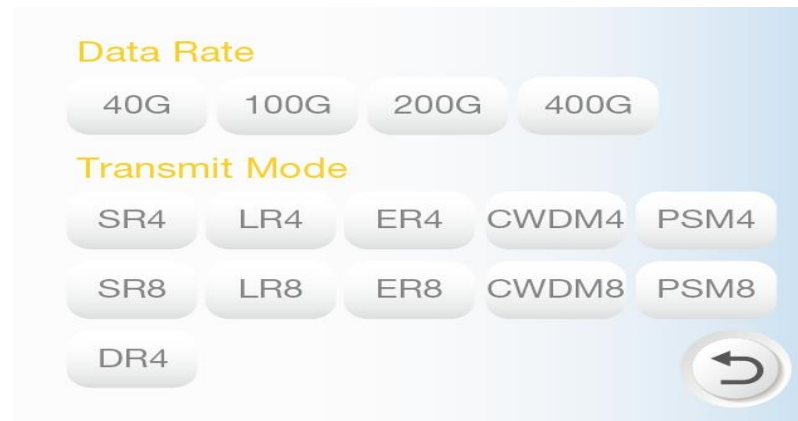
400G SR8

850/850/850/850/850/850/850/850

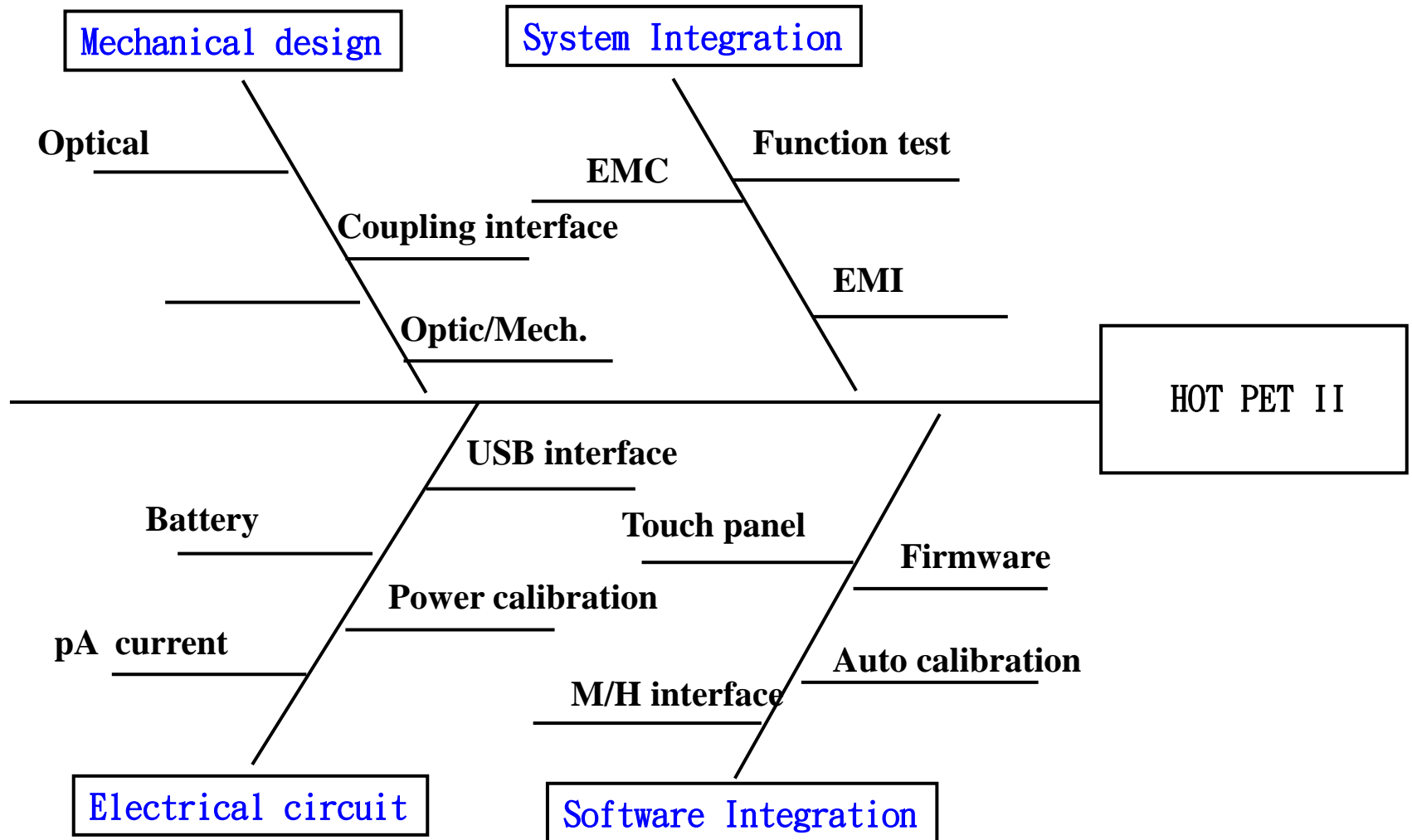


400G LR8

1273/1277/1282/1286/1295/1300/1304/1309



# Ishikawa Diagram (Fishbone Diagram) : Technology breakdown





# HOTPet II Specification



## □ Specification and Function

Item	Value	Unit
SM Receiving Power Range	+5 ~ -60	dBm
Wavelength Range ( PSM4/8 )	1310	nm
Wavelength Range ( CWDM4 )	1270/1290/1310/1330	nm
Wavelength Range ( LR4 )	1295/1300/1305/1310	nm
Wavelength Range ( CWDM8 )	1271/1291/1311/1331 1351/1371/1391/1411	nm
Wavelength Range ( LR8 )	1273/1277/1282/1286 1295/1300/1305/1309	nm
MM Receiving Power Range	+5 ~ -50	dBm
Wavelength Range ( SR4/8 )	850	nm
Saving Memory Records	600	Data
Battery Operating Time	6	Hours



*Thank you very much  
for your attention.*

*köszönöm !תודה dĕkuji*

*mahalo 고맙습니다*

*thank you*

*merci 谢谢 danke*

*Ευχαριστώ شكرا*

*どうもありがとう gracias*

